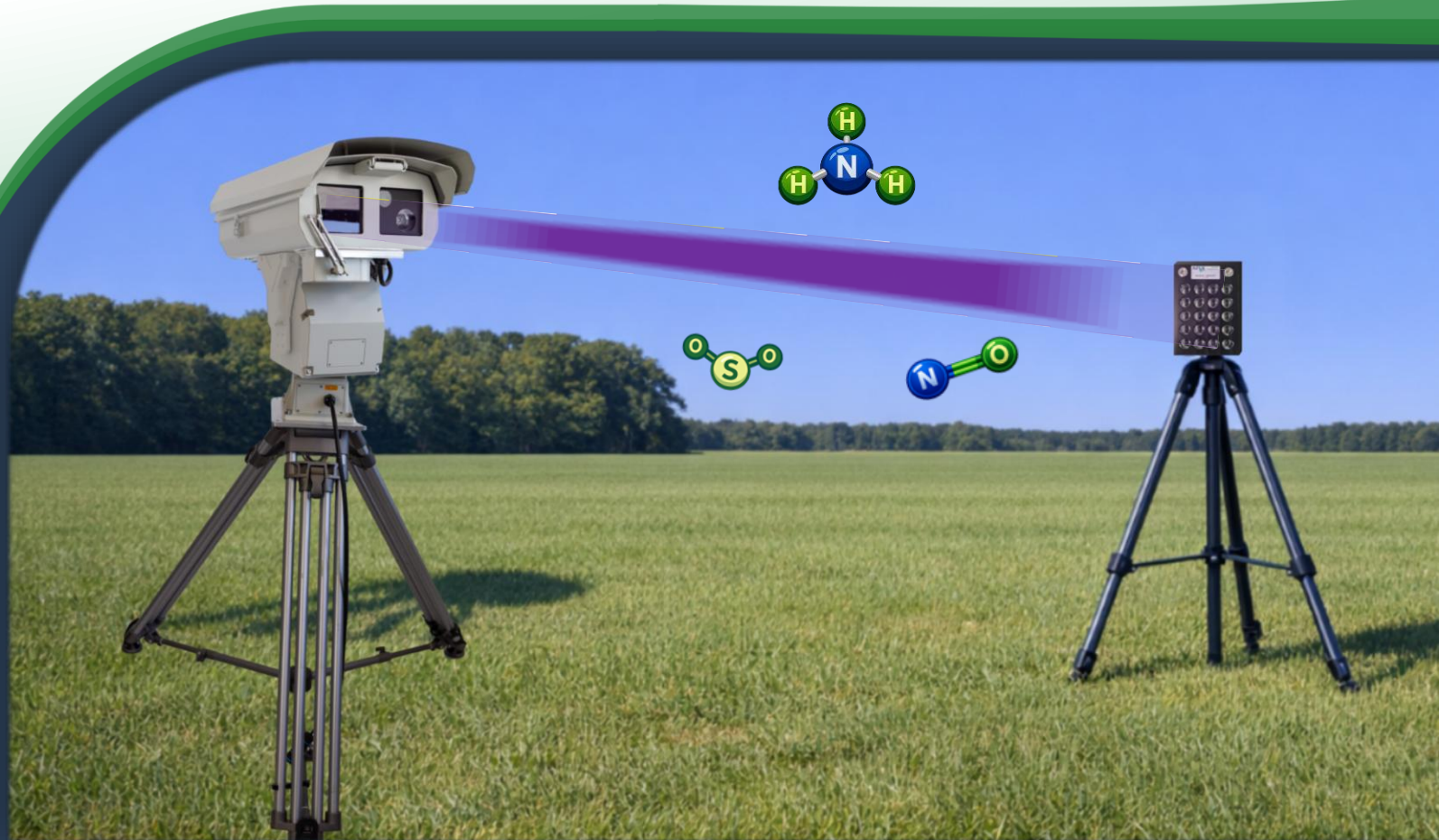
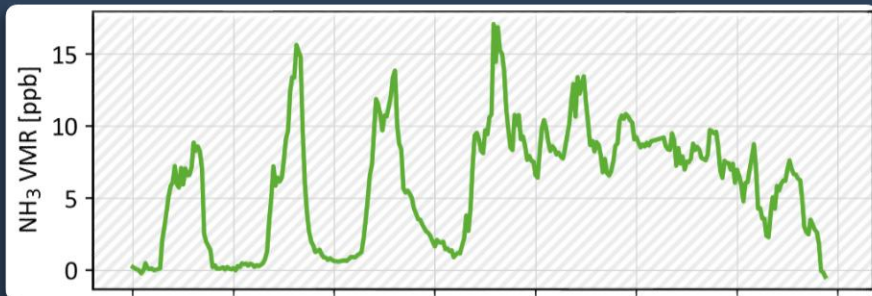


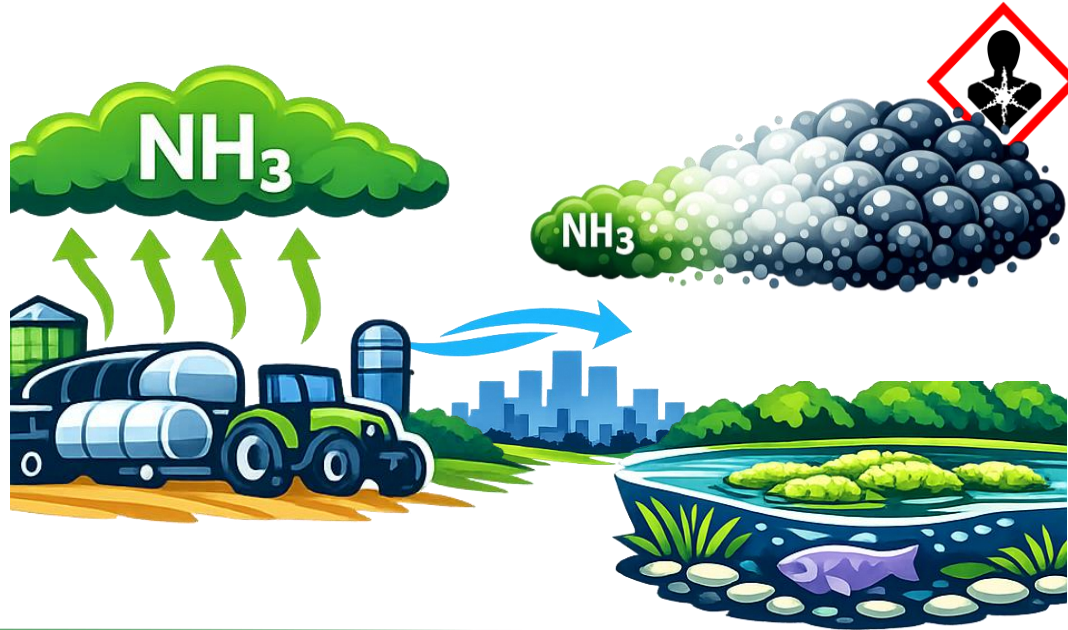


Airyx Open Path Compact NH₃

Contact-free ammonia detection for uncompromised accuracy.



Rising demand for Ammonia Measurements



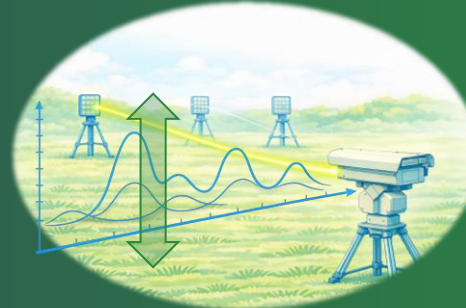
EU: Mandatory NH_3 monitoring



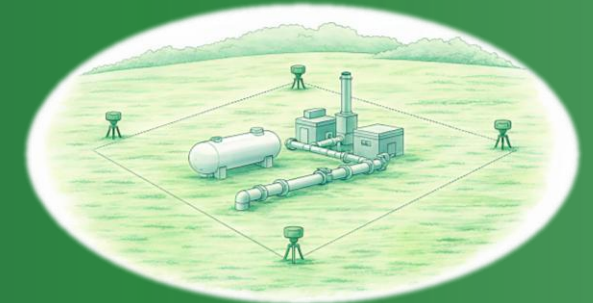
Agriculture & industrial emission



Flux & spatial distribution analysis

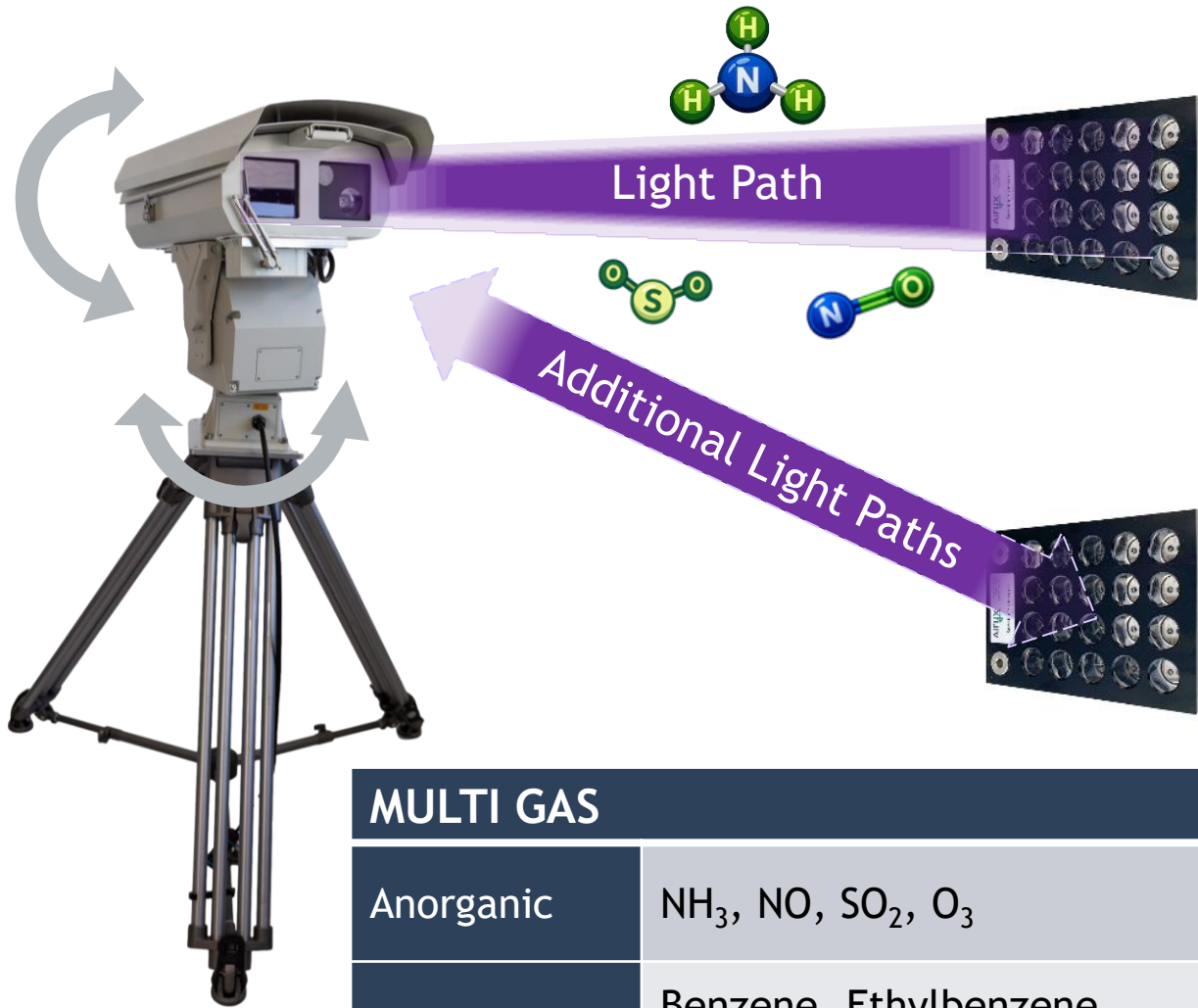


Process control & fence line monitoring



Open Path Compact NH₃

Contact-free ammonia detection for uncompromised accuracy.



MULTI GAS	
Anorganic	NH ₃ , NO, SO ₂ , O ₃
Aromatic	Benzene, Ethylbenzene, Xylene, Toluene

	NH ₃	NO	SO ₂
Range	1 ppb - 100 ppm	3 ppb - 5 ppm	5 ppb - 20 ppm
Uncertainty (5 min)	0.6 ppb 0.4 µg m ⁻³	1.5 ppb	2.5 ppb
Uncertainty (1h mean)	0.10 ppb 0.08 µg m ⁻³		



COMPACT & FLEXIBLE

One instrument – multiple light paths
Optional tripod



RUGGED & OUTDOOR-READY

Weather-Proof (IP64)



SMART DATA ACCESS

WIFI & LAN, M2M Communication (UIDEP)
Internal data storage

Effortless Setup & Maintenance



Easy & flexible setup



Stationary or mobile on tripod



Camera-supported identification of viewing directions



Automatic alignment & adjustment of light path

Low Running Costs

- Lamp change 2-3 x / year

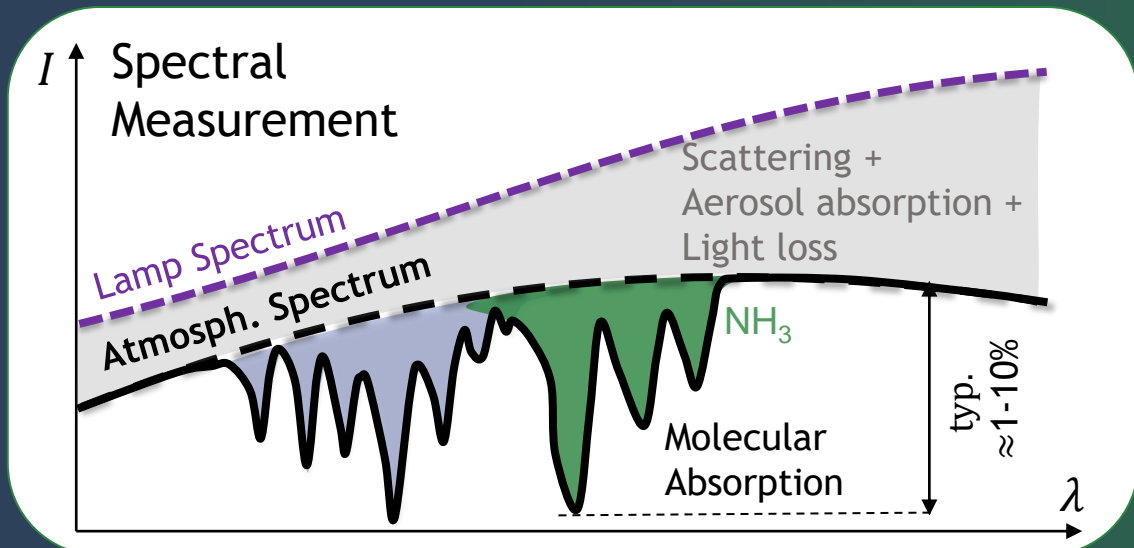
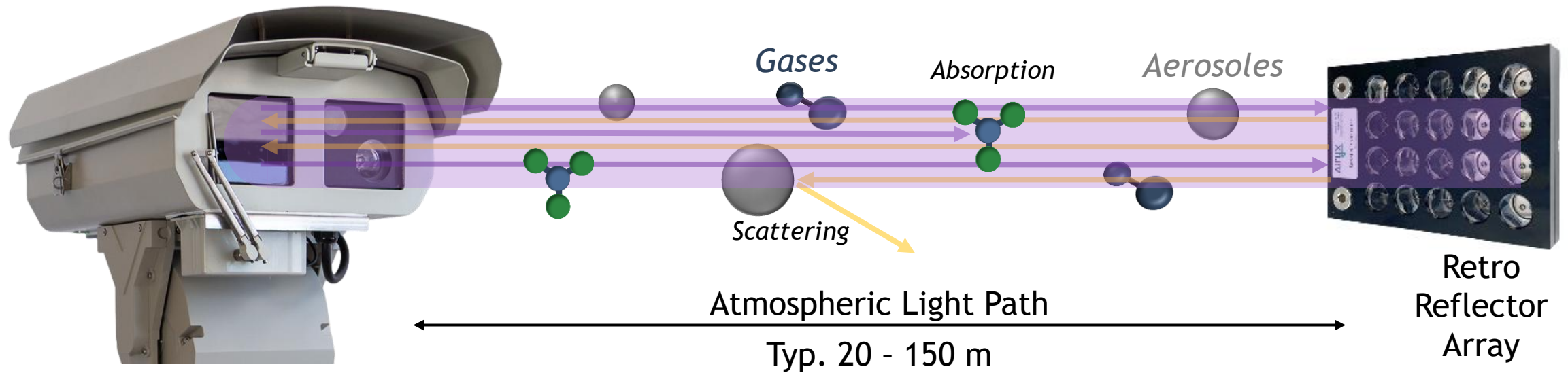


- Dessicant change 2 x / year

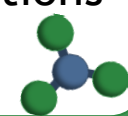
- Cleaning of window, reflector & heat sink filter

- **No other consumables**

Open Path DOAS (OP-DOAS) Measurement Principle



Path-averaged concentrations



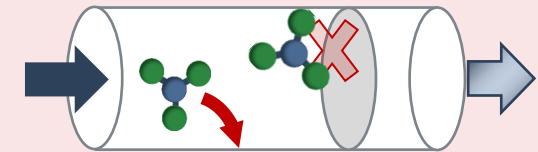
No calibration gases required

Open Path DOAS Advantages

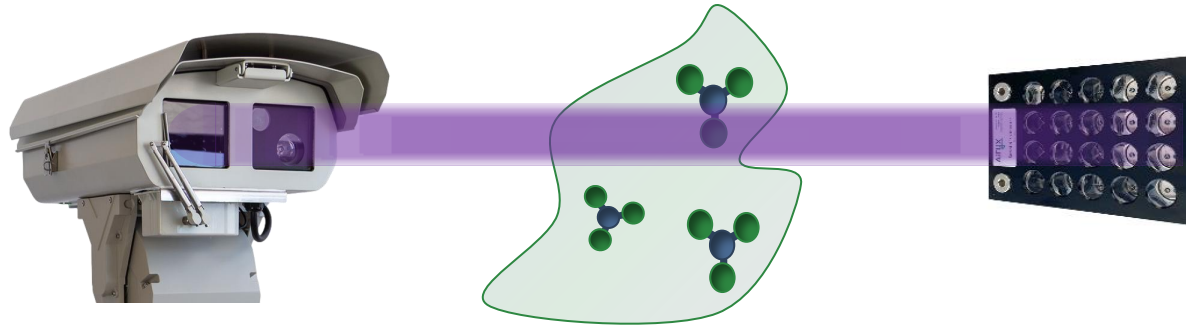
CONTACT & LOSS FREE

No surfaces - no losses

Sampling methods:



Losses & adsorption



SPATIALLY
REPRESENTATIVE
across entire light
path

HIGH PRECISION



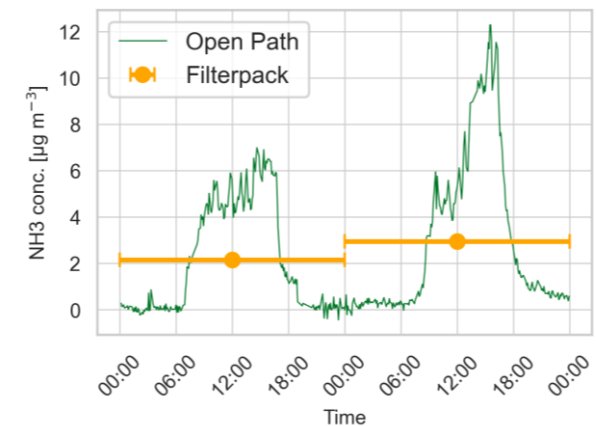
Automatic zero
reference

CALIBRATION FREE

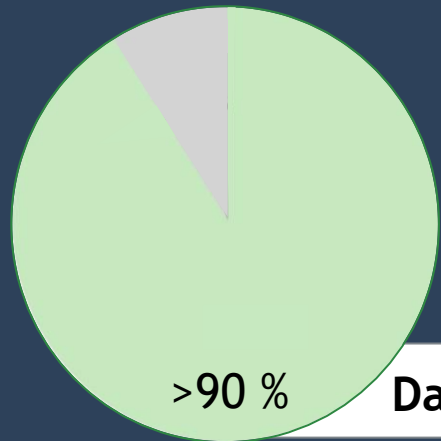
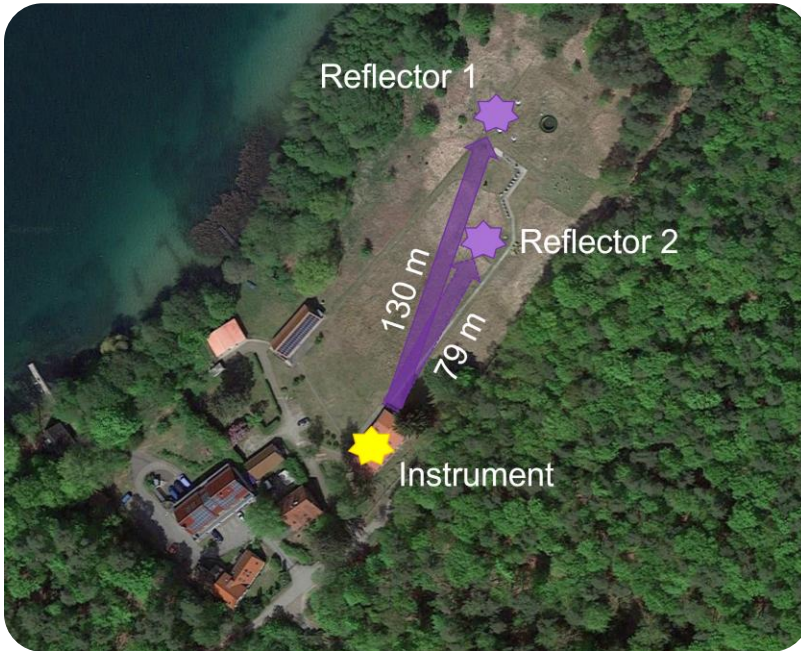


Low running costs

HIGH TEMPORAL RESOLUTION

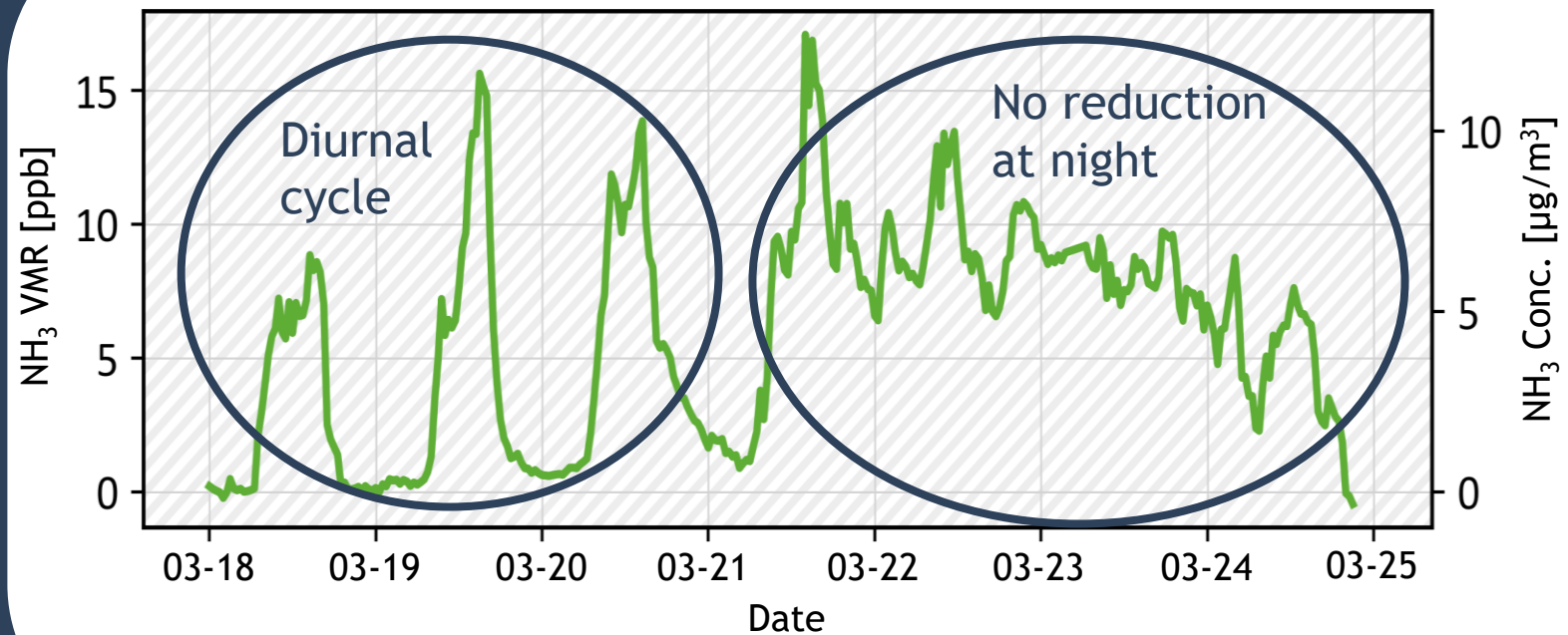


One year of measurements at Neuglobsow, Germany



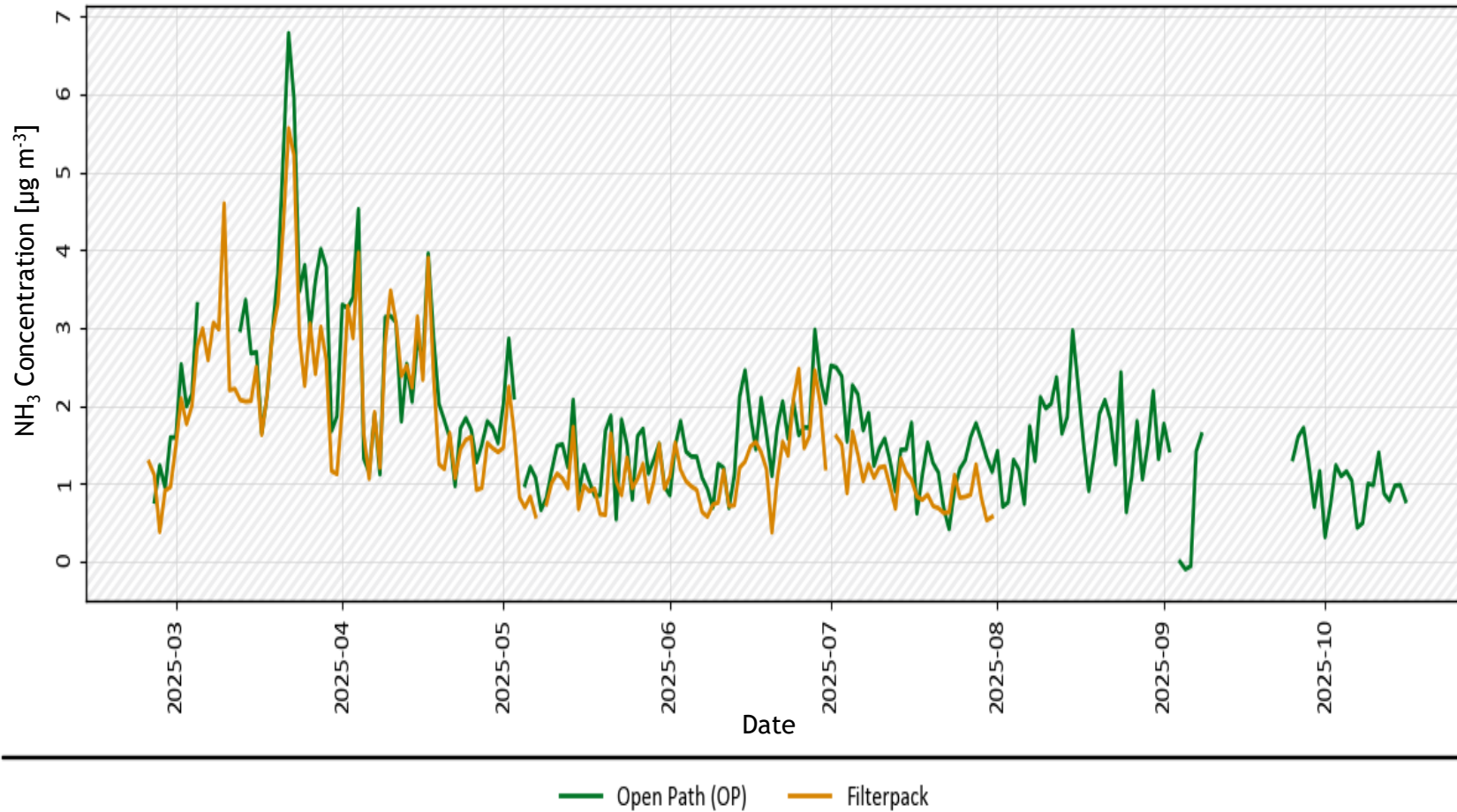
Data Coverage

18 Mar 2025 - 24 Mar 2025 Neuglobsow

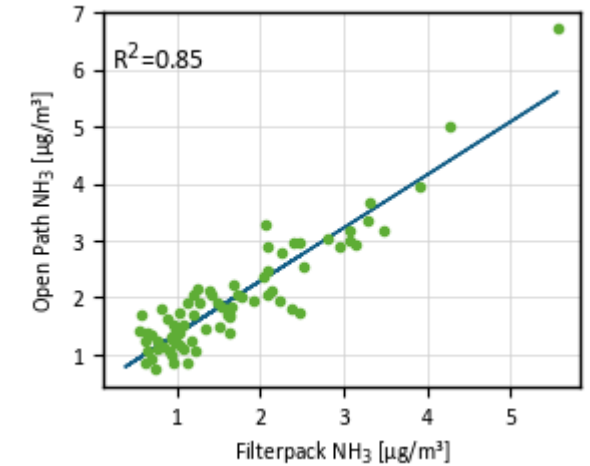


Validation against established NH₃ Measurement Methods

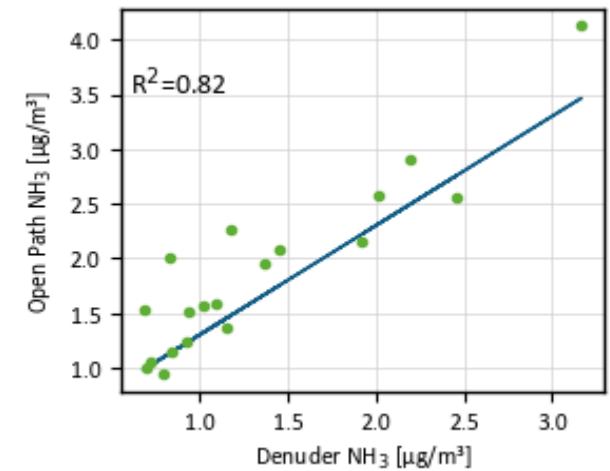
Filterpack and Open Path Daily Averages



Correlation to Filterpack



Correlation to Denuder





Datasheet



Contact us



Website

